

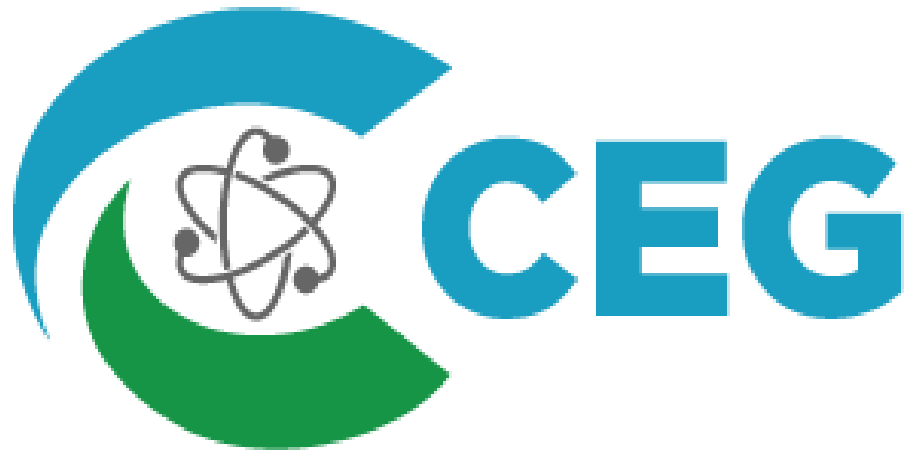


Capital Energy Group, LLC

EXPERIENCE | SOLUTIONS | RESULTS

DEMOLITION | ENVIRONMENTAL SERVICES | CONSTRUCTION

Conquering Today's Nuclear & Environmental
Challenges for a Better Tomorrow



Capital Energy Group

Capital Energy Group, LLC (CEG) is a Small Woman Owned Business Enterprise and privately held company that specializes in niche projects performing Commercial and Federal Nuclear Facility Decontamination, Demolition, PAAA Radiological and Non-Radiological Projects, Emergency Response, Asbestos Abatement, Beryllium Abatement, Lead & Mercury Clean-Up, Hazardous Material Removal, Environmental Remediation, Deconstruction, Decommissioning, Heavy Equipment Removal Segmentation and Salvage Operations.



Safety is Our Core Value

Capital Energy Group's health, safety and environmental (HSE) culture is driven by our uncompromised values. At CEG, we believe the well-being of our people is fundamental to our success. We approach EH&S from a combination of core principles and extensive knowledge obtained over many decades of experience. Year after year we are ranked as one of the safest companies in our industry, and we have set the safety standards by which other demolition and environmental companies are judged.

Our time-tested values of safety excellence and integrity ensures the quality and well being of our people and projects.

CEG is committed to developing a caring, preventive safety culture across our organization. Safety drives the actions of every employee at every location, every day. Our people deserve it. Our clients demand it. Our performance and reputation depends on it.

We are Safer Together,

Thomas G. Coldwell
SMS, OHST, CHST, STSC
CEG Vice President of EH&S

Overview



Capital Energy Group (CEG) safely self-performs demolition, environmental, and nuclear emergency response of high-risk, technical radiological and non-radiological complex projects and programs at commercial nuclear, power plants, and DOE government Manhattan Project hazardous legacy waste sites.

Our personnel ensure operational integrity and apply rigorous safety procedures that enable effective and responsible solutions to our projects.



CEG Personnel Performed the First DOE Complex Open-Air Demolition of a Hot Cell

Providing Effective Solutions & Professional Services



CEG regularly addresses the complex radiological, chemical and hazardous materials found in DOE and Commercial Nuclear facilities, refineries, chemical plants and manufacturing facilities, and utilizes proprietary technology, specialty equipment, licensing, and the comprehensive field experience of highly skilled management and site personnel, complimented by local unions, to safely and efficiently complete each project. We have performed these projects under both the Demolition FAR and Construction FAR.



CEG Performed the First and Only Remediation and Removal of the Process Waste Lines and Liquid Low Level Waste Lines from the Original Hot Cells of the Manhattan Project at ORNL

Providing Effective Solutions & Professional Services



We utilize our own in-house project management teams supported by our corporate office executive management, that routinely go back into the field to manage projects, over each of our specific industry sites. Our in-house site project managers are subject matter experts (SME's) that have on average over 30-years in the field performing the related scope of the projects they are assigned to oversee. CEG governmental and commercial nuclear site management teams work to a proprietary Project Execution Plan (PEP) and a Work Breakdown Structure (WBS) system that is governed under our Project Management Operational Playbook.



1200 Centrifuge, 1600 Centris, & 9207 Biology
UHD Radiological Demolition at K25/ETTP/Y12

Founders



Capital Energy Group, LLC was founded by the McNamara Family after a purchase and federal novation from a previous employer where the McNamara's worked and managed the Federal and Commercial Nuclear Group. The company was rebranded as CEG to incorporate additional project services to the nuclear industry.

Our Founders

Jordan McNamara, Principal Managing Member & CEO

Thomas McNamara, COO & President



CEG's Principal Managing Member & CEO

Jordan McNamara, Principal Managing Member and CEO of Capital Energy Group (CEG), brings more than a decade of executive experience in the nuclear and environmental industry. Prior to CEG, Jordan was the Chief HRO, CFO, and General Manager for DEMCO Power Services Group where she oversaw all business and HR operations across multiple departments making sure company goals were attained in a productive and effective manner.

Jordan brings forth a results-oriented track record in managing staff, projects, vendors, and a multitude of business operations that has continually led to company growth and advancement across numerous sectors. She has a passion for excellence and believes it is CEG's dedicated safety driven employees that are the best partners to continued success within the company and industry at large.

Jordan holds a BS in Marketing and Entrepreneurship from The University of Tennessee's Haslam College of Business.



**Turkey Point Nuclear
Station Large Component
Removal Project**



Executive Operations Management

Thomas J. McNamara
Chief Operations
Officer/President

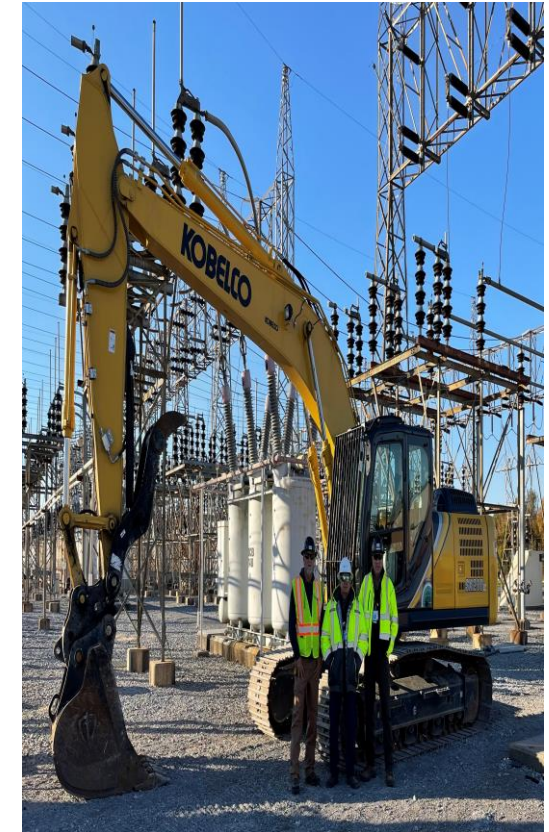
- >37 Years of Executive Management In Power And Governmental Markets
- >37 Years of Commercial Nuclear Experience
- >23 Years of DOE, DOD, NAVSEA, USACE D&D and Specialty Operations
- >\$4B in Managed Commercial Nuclear And Government Projects (DOE, DOD, NAVSEA, USACE D&D)
- Former Nuclear Power Utility and Construction Executive, BWR & PWR Nuclear Containment Specialist.
- Nationally Recognized Operations SME in the Nuclear Power and Federal D&D Industries

John C. Lexo
Executive Vice
President

- >46 Years of Managing Demolition and Environmental Projects at Commercial Nuclear Facilities, Power Plants, DOE, DOD, USACE, and General Industrial Sites
- >\$2B in Managed Commercial Nuclear and Government Projects (DOE, DOD, NAVSEA, USACE D&D)
- Former Business Executive & Owner of BORET Construction Group
- Former US Army J2 Intelligence Officer
- Nationally Recognized D&D and Environmental SME

Thomas G. Coldwell
Vice President EH&S
QA/QC

- >32 Years of Managing Demolition, Construction, and Environmental Projects at Commercial Nuclear Facilities, Power Plants, DOE, DOD, USACE, and Oil Facilities
- >\$500M in Managed Commercial Nuclear and Government Projects (DOE, DOD, NAVSEA, USACE D&D)
- Degreed & Certified Safety and IH Professional: SMS, OHST, CHST, IH, STSC
- Former US Army Combat Medical Specialist
- Nationally recognized D&D and Environmental SME



C537 Switchyard Project

Company Information



Company Officers:

Jordan T. McNamara, Principal & CEO

Email: jmcnamara@capitalenergygroup.com

Phone: (865) 936-4750 / FAX: (865) 381-1260

Cell: (865) 599-6723

Thomas J. (T.J.) McNamara, COO & President

Email: tmcnamara@capitalenergygroup.com

Phone: (865) 936-4750 / FAX: (865) 381-1260

Cell: (410) 441-0166

Company Information:

State Incorporated: Delaware

States Licensed: 17

EIN: 84-3190384

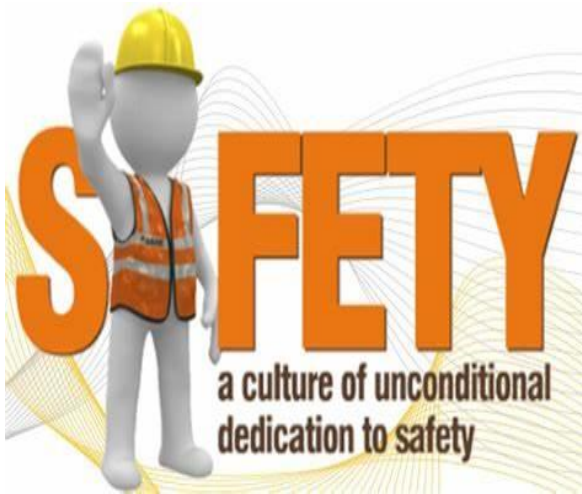
Dun & Bradstreet: 117223059

Cage Code: 8FPR9

Bonding: \$45,000,000.00

NAICS: 562910, 238910, 238990, 237990,
541620, 561320, 561330, 561499,
562119, 624230

Safety Information



Description	2021	2020	2019
Number of Hours Employees Worked in Year/ Number of Employees	31,769/ 15	24,724/ 12	22,056/ 11
Number of Fatalities, if any, During Year	0	0	0
Number of Lost Workday Cases	0	0	0
Number of Cases as Defined as Recordable with Restricted/Light Duty	0	0	0
Number of Cases Defined as Recordable, but Without Lost Workdays	0	0	0
Total Number of Cases (M) (Not Workdays)	0	0	0
Recordable Injury Frequency Rate* (RIFR)	0	0	0
Lost Time Incident Rate (LTIR)	0	0	0
Days Away, Restrictions and Transfers (DART)	0	0	0
Total Number of Lost Workdays, Not Cases	0	0	0

Providing Effective Solutions & Professional Services



From cradle to grave, large scale D&D services, technical operational management, capital projects, nuclear emergency response, or hazardous environmental remediation and clean-up; CEG is the single source turnkey provider for all your facility needs.

- Capital Projects
- Abatement
- Craft and Staff Management
- Rigging
- Facility Modifications
- Outages, Shutdowns, Turnarounds
- NDE, NDT
- Surgical Equipment Removal
- Nuclear Emergency Response
- Major Radiological Contaminated Equipment Segmentation
- Plant Decommissioning, Demolition, Deconstruction, Dismantlement, and Salvage



Services

Demolition & Remediation Services

- Dismantlement & Relocation
- Equipment Rigging
- Large Component Removal
- Conventional Demolition
- UHD & High Reach Demolition
- Radiological Demolition
- Implosion/Controlled Structure Collapse
- Ferrous & Non-Ferrous Metal Processing
- Emergency Response Services
- Material Characterization & Stabilization
- Material Loading & Shipping for Disposal
- Low Level Radiological Remediation
- Lead, Mercury & PCB Remediation
- Identification, Handling & Containerization of Hazardous Materials
- Radiological Water Removal and Disposal
- UST Cleaning, Removal & Site Restoration
- Emergency Containment & Spill Response for Hazardous Materials
- Manifesting, Transportation & Third-Party Disposal of Hazardous & Non-Hazardous Waste



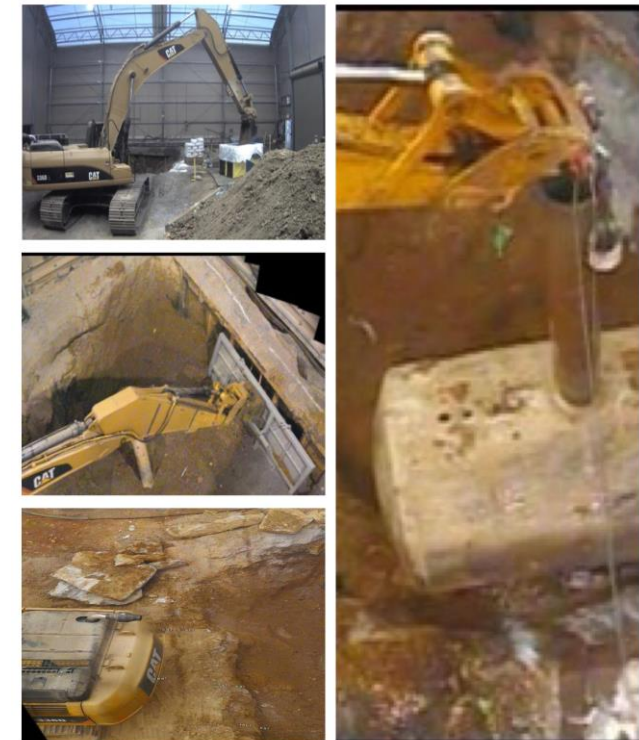
ORNL Building 7001
Radiological Demolition & ACM

Services



Decontamination and Hazardous Material Services

- State-of-the-Art Engineering Controls
- Hazmat Abatement
- ACM Abatement
- Beryllium, Mercury, Lead Abatement
- Mold Abatement
- Chemical Decon
- Rad Decon
- Mechanical Decon
- PCB Oil Removal
- UHP Blasting & Cleaning Services
- Removal, Transportation & Disposal of Sludge, Liquids & Solid Industrial Residue and Waste
- PAAA
- Line Purging & Flushing
- Removal, Encapsulation & Enclosure of Asbestos Containing Materials
- Transportation & Disposal of Hazardous Materials



Tank W1A Building & Soil
Remediation and Removal



Staff Augmentation Support Services

CEG - PMP Group

Is a multi-disciplinary staffing and technical consulting division of Capital Energy Group, LLC offering long and short term augmented staffing solutions to support demolition, environmental and capital projects for our M&O clients in the commercial nuclear, federal, power, and industrial construction industries.

Project Management & Specialty Services

CEG - PMP recognizes the complexities involved in staffing large industrial construction, nuclear and specialty utility projects. Our Project Staffing Method promotes consistent practices in the evaluation and placement of associates and assures alignment with project-specific goals and objectives. The employee staffing process is designed to integrate our client's need and the project scope in the evaluation of candidates.



“On behalf of the Projects Group, I wish to extend my appreciation to the Project Staff and Executive Management of CEG who have contributed to the success of the Yokogawa Recorder Control Room Project and the Emergent Outage I&C Containment Project at FPL’s St. Lucie & Turkey Point Nuclear Power Facility”

William Wallach
FPL Projects Group



Professional Support Solutions

- Project Management Support Staff
- Project Controls, Planning and Scheduling
- I&C Planning, Engineering & Technicians
- QA/QC Program Management
- Asbestos/Lead Abatement Specialists
- Craft Supervision
- Field Engineers
- Cost Engineering & Estimating Staff Support
- Industrial Safety Professionals
- Cyber Security



C537 Switchyard Project

Project Sites

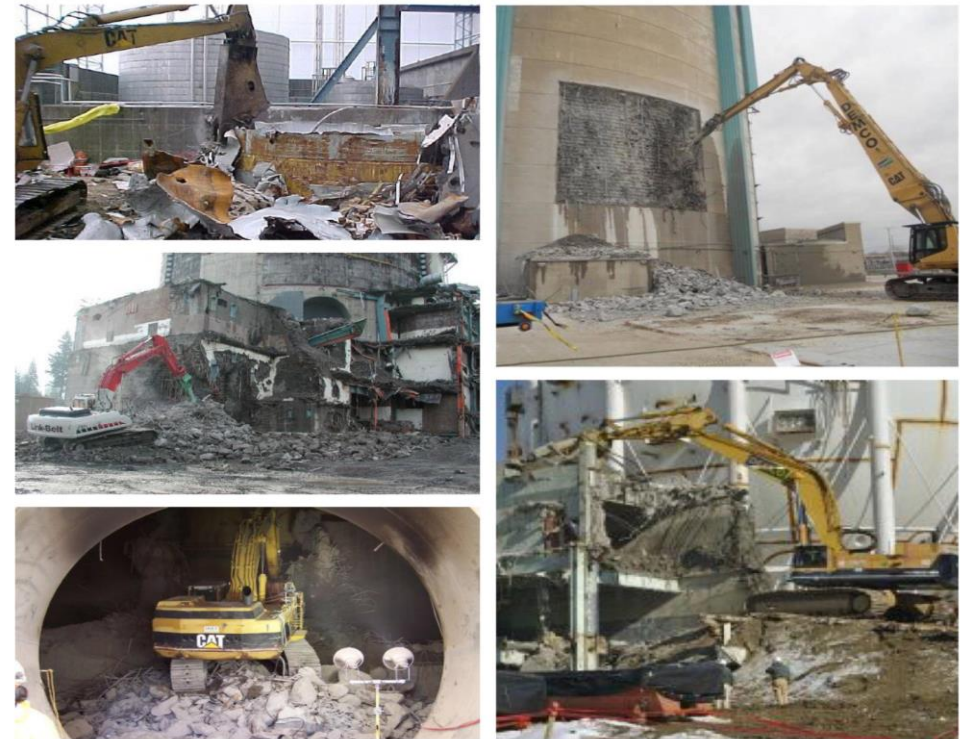


CEG's Founders & Management

Providing Effective Project Solutions Over the Last 15 Years

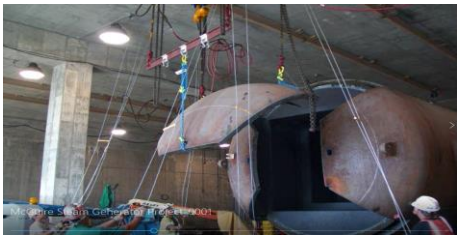
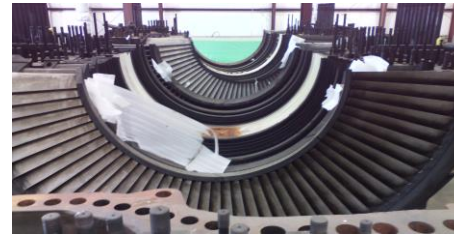


- Over 750 projects completed in the Commercial Nuclear industry, DOE, DOD, NAVSEA, Power, and USACE.
- CEG is a national leader in self performing nuclear decommissioning, demolition, environmental, LCR, segmentation of large-scale equipment, and outage projects.
- CEG offers unparalleled safe successful solutions and predictable quality for our client's ongoing operations, critical path and emergency response projects.



Connecticut Yankee, Yankee Rowe, Trojan, Rancho Seco, Zion D&D & Large Component Removal, Segmentation, and Disposal

Commercial Nuclear LCR Projects



- McGuire Steam Gen Segmentation & Disposal
- St. Lucie Steam Gen Segmentation & Disposal
- Turkey Point CPU & Resin Tank Segmentation & Disposal
- North Anna LP & HP Turbine Segmentation & Disposal
- Yankee Rowe Vapor Containment Segmentation & Large Component Removal



Commercial D&D Nuclear Projects



- Yankee Rowe Generating Station
- Maine Yankee Reactor Building & Pipe Tunnels
- Connecticut Yankee Generating Station
- Rancho Seco Reactor Building
- Zion Reactor Building Equipment Hatch Expansion & Asbestos Abatement
- Trojan Power Block & Reactor Building
- LaCrosse Site Decommissioning Management

Fossil - Total Plant LCR & Deconstruction Projects



- JEA/FPL Jacksonville Power Station
- Exelon Cromby Power Station
- FPL Putnam Power Station
- RG&E Russell Power Station
- Santee Cooper Jefferies Power Station
- ConEdison Brooklynn Tank Farm & Power Station
- CSW Concho Power Station
- CSW Weleetka Power Station
- Progress Energy Higgins Power Station
- Progress Energy Turner Power Station
- Clark Port Arthur Power Station
- Valero Paulsboro Power Station
- TN Gas Transco Power Station
- NGPC Omaha Power Station
- FG&E Fitchburg Power Station
- TVA Holly Power Station



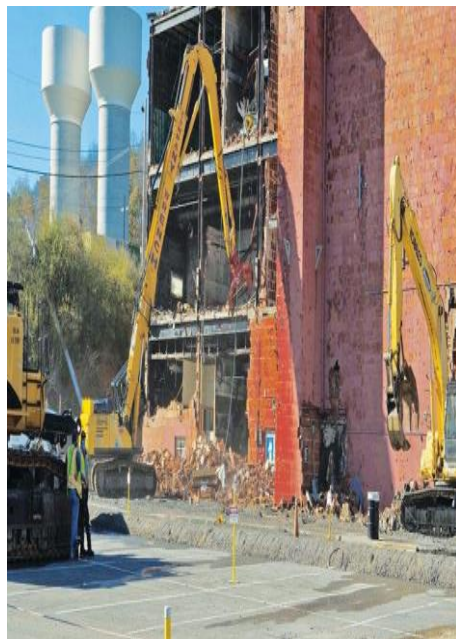


Capital Energy Group, LLC DOE DD&R Projects

“The Small Business Company With A Large Business Resume”



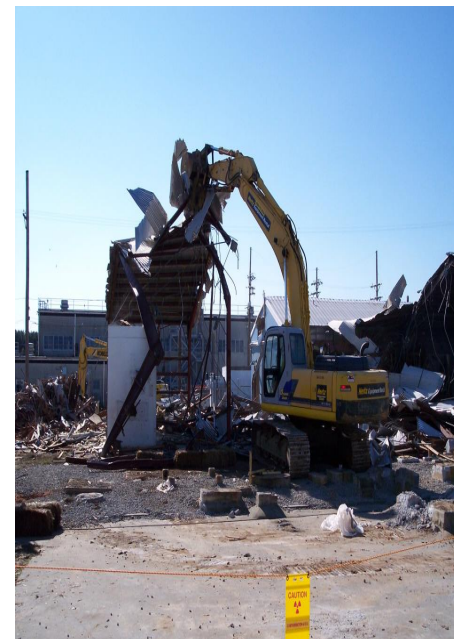
ORNL



Y12



PGD



SRS



ETTP

Department of Energy Facility	D&D, ACM, Rad, Beryllium, Transite, Mercury, Lead, Demolition Projects
Portsmouth Gaseous Diffusion Plant	X333 Bulk ACM, Test Facility, D&D Building Estimates
Paducah Gaseous Diffusion Plant	C333, C537 Switchyard, C340, C627, C746, C400, R-114 BOA
East Tennessee Technology Site (K25)	1200 Centrifuge, 1600 Centrifuge, Tank W1A, Witherspoon, 1630, 1420, K27, K29, 5-Year D&D BOA, 5-Year HE BOA
Oak Ridge National Laboratory	CRSF, 2644, 7914, 7914A, 7915, HFIR Micropiles & Remediation, MPOB GC, 4500S, 4500N Data Center, 3500 Area PWL/LLWL, 6000B, 4505, 7065, 7040, 7001, 7000 Area, 2018 Small Suites DD&R, 2019 Small Suites DD&R, Melton Valley, Storage Area 4, OHSL, PAM
Fernald National Laboratory	Plant S Complex
Rocky Flats Environmental Technology Site	771, 707, 774, 776, 777, 779, 560, Tanks, 123
Hanford National Laboratory	2322, 748
Idaho National Laboratory	AMWTP, Reactor Dome
Argonne National Laboratory	Juggernaut Reactor, 301 Hot Cell, 310, 340, 410
Lawrence Livermore National Laboratory	212, 431
Princeton Plasma Physics Laboratory	D-Cell, PBX, AVL, C-Site, Reactor Turbine, I&C/Electrical SA
West Valley National Laboratory	Boiler House
Savannah River National Laboratory	320M, 322M, 284F, 730, 731, 732, 733, 734
Mound National Laboratory	Test Facility, D&D Services
Los Alamos National Laboratory	TA21, TA53
Y12 NNSA	Biology Complex Building 9207 UHD, OHF Facility, D&D Task Order 101 & 104
Commercial Nuclear Sites	D&D, ACM, Rad, Transite, Specialty Projects
Yankee Rowe Nuclear Generating Station	Full Site D&D
Connecticut Yankee Nuclear Generating Station	Full Site D&D
Trojan Nuclear Generating Station	Reactor Building
Rancho Seco Nuclear Generating Station	Reactor Building
Main Yankee Nuclear Generating Station	Reactor Cavity, Pipe Tunnels, BOP
Zion Nuclear Generating Station	Reactor Building, BOP
Exelon Nuclear Fleet (21 Units)	Specialty Services, I&C
Florida Power & Light (6 Units)	Specialty Services, I&C, I&E, D&D, EPU, SA
Turkey Point Nuclear Station	Intake Emergent, CPU, LCR, EPU, SA, I&C, Yokagawa DR, Outage Services
St. Lucie Nuclear Station	I&C, Outage Services, Steam Gens Segmentation, LCR
Prairie Island Nuclear Station	Generator Segmentation, LCR
McGurie Nuclear Station	Steam Gens Segmentation, LCR, SA
North Anna Nuclear Station	HP/LP Turbine Segmentation, I&C, SA



PO Box 2008
Oak Ridge, TN 37831-6257
(865) 574-5766 | lamanasl@ornl.gov

December 9, 2019

Mr. TJ McNamara
DEMCO/CEG Project Manager

4500N Data Center Demolition Task

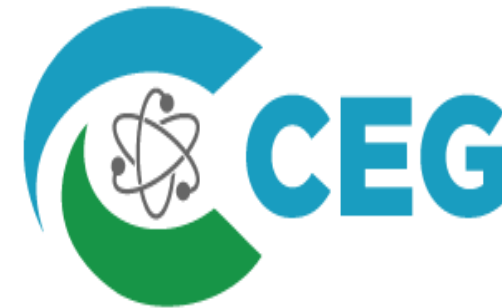
On behalf of ORNL's Facilities Management Division (Excess Facilities team), we were very pleased with the work that DEMCO/CEG performed on the 4500N Data Center Demolition Task. This project involved significant risks (beryllium, asbestos, electrical Hazards, working in areas where hazards were not visible until components were removed, as well as working in areas with little to no as-built drawings to show hidden utilities/conduits). It was very noteworthy that there were no reported injuries, no exposure to hazardous materials, and the task was completed in a timely fashion. Additionally, your team performed exemplary given the location of the work – in a highly visible area next to many offices. Again, thank you for the excellent work and we welcome the opportunity to work together in the future.

Thanks,


Steve Laman (Technical Project Officer)


Aaron Hicks (Technical Lead/Project Support)

CEG performs 100% of the work scope on all projects awarded to us with our inhouse staff of nuclear industry Subject Matter Experts (SME's) managing all task operational evolutions, safety, quality, project controls, and our union craft personnel. We will not risk operational integrity or the safety of our workers, our clients, and the general public.





Capital Energy Group, LLC

EXPERIENCE | SOLUTIONS | RESULTS

DEMOLITION | ENVIRONMENTAL SERVICES | CONSTRUCTION

Conquering Today's Nuclear & Environmental
Challenges for a Better Tomorrow